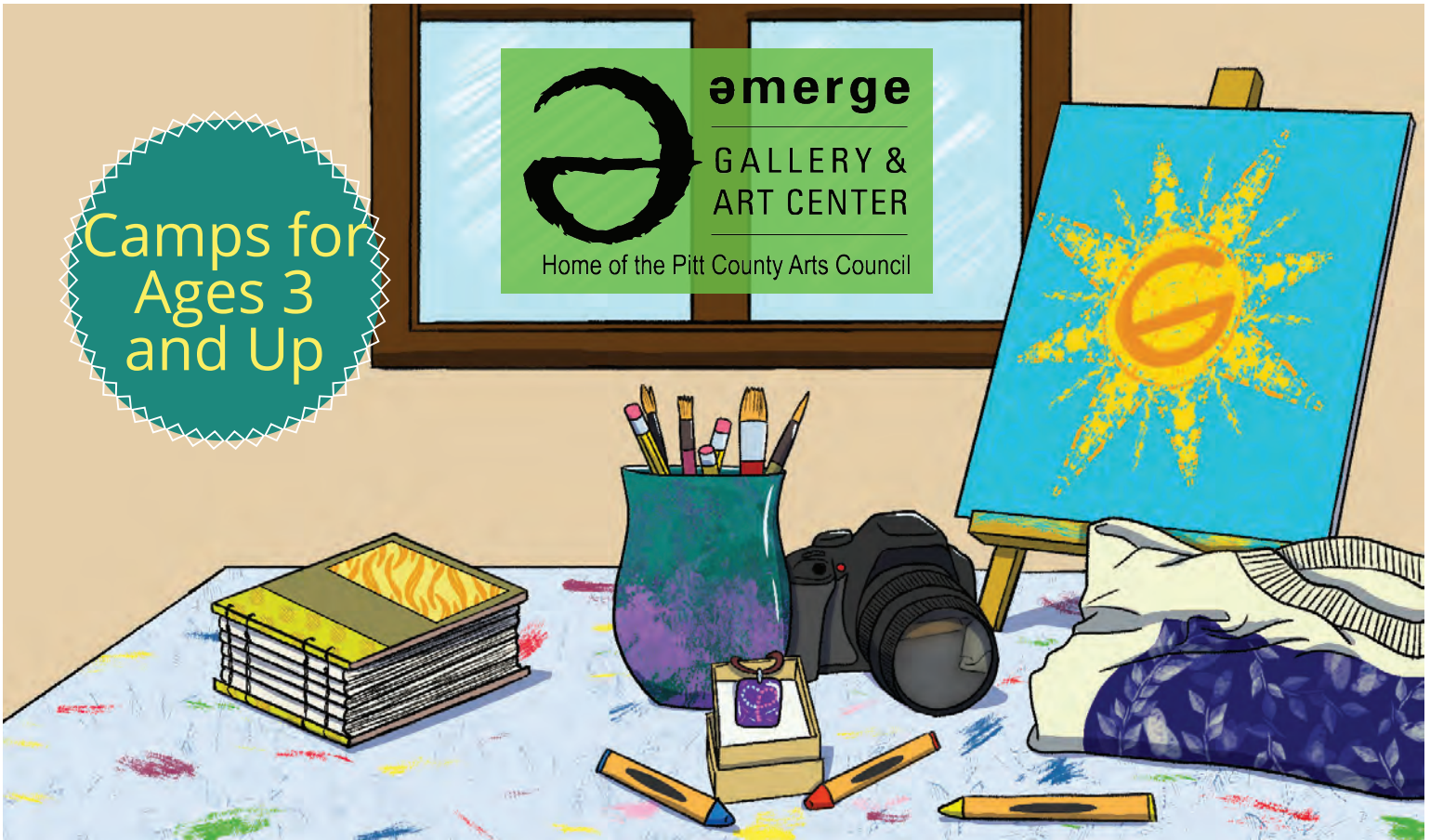


Camps for  
Ages 3  
and Up

**emerge**  
GALLERY &  
ART CENTER  
Home of the Pitt County Arts Council



# Summer Art Camps



**Emerge Gallery & Art Center**  
404 Evans Street | Greenville, NC 27858 | [www.emergegallery.com](http://www.emergegallery.com)



### Mission Statement:

Emerge Gallery & Art Center is a non-profit organization dedicated to enhancing the quality of life in Pitt County by promoting artists and arts organizations, educating through the arts, and making the arts accessible to the entire community.

### Contact Us:

404 Evans Street, Greenville, NC 27858  
(252) 551-6947 | info@emergegallery.com  
www.emergegallery.com

### Questions about Summer Camp:

If you have questions or need assistance please contact Paula Rountree by phone or email paula@emergegallery.com.

Programs, Pricing, and Info

Pages 3-5

Mini Masters Camps: Age 3 - Grade K

Pages 6-8

Emerging Artists Camps: Grade 1 - 5

Pages 10-16

Advanced Youth Camps: Grade 6 and up

Pages 18-24

Membership Form

Page 26

Registration Form

Pages 27-28

## About Emerge

The Emerge Gallery & Art Center is the local arts council for Pitt County. The Emerge Gallery & Art Center is located in a facility with over 8000 square feet, at 404 Evans Street in Downtown Greenville. There are three main gallery spaces, including two that rotate monthly with new exhibitions.

Emerge has a full art center including a pottery facility with thirteen potter's wheels, a metalsmithing studio, photography classroom, and two general classrooms. Emerge offers weekly adult and youth classes, workshops, and special events, as well as a full youth summer program.

Part of the Emerge Gallery & Art Center's mission is to make the arts accessible to the entire community. For every five paid programs, one is completely free and targeted towards youth. We do this through after school music and art programs in the Pitt County Public Schools, artist in residency programs, and our Youth Arts Initiative program that includes scholarships and our Youth Public Arts Project.

## Keep Up with our Summer Fun!



PittCountyArtsCouncil



PittCountyArts



PittCountyArts



PittCountyArts



emergegallery.com



PittCountyArts





# Programs

---

## Mini Masters (Age 3 - Grade K)

The Mini Masters Program at Emerge caters to children in grades Pre-K to K and is a drop off camp program. Camp activities introduce young children to all areas of art, including pottery, painting, drawing, and more! We ask that all children enrolling in the program camps be potty trained.

## Emerging Artists (Grade 1-5)

The Emerging Artists' Program at Emerge offers youth the opportunity to experience the world of art through fun, interactive programs including activities such as painting, potter's wheel, printmaking, photography, and much more! Please note, campers are separated into appropriate classes when possible.

## Advanced Youth (Grade 6 and Up)

The Advanced Youth Program at Emerge is a great opportunity for "tweens" and teenagers to expand their knowledge and expertise in various areas of fine art. We pride ourselves on high-quality, hands-on activities not offered in most schools such as metal design, potter's wheel techniques, alternative photography, painting with advanced methods and materials, film editing, and more. Youth Camps are opportunities for youth to immerse themselves in the art area of their choice. Participants will work on in-depth art projects in the set area.

## Volunteers (Age 15 and Up)

We seek ambitious and dedicated youth and adults, ages 15 and older, to assist with our youth educational programs. Volunteers will help Emerge Staff with a variety of tasks, as well as serving as assistants to Emerge Instructors. Participants will receive an official letter documenting hours and service with our organization.

# Guidelines

---

- Sign up by grade for 2024-2025 school year.
- During camp we will have a scheduled snack time. Emerge will not provide snack. Parents/guardians are responsible for packing snack and water for their camper. Campers staying for half-day will have one snack time, full day campers will have two snack times and a lunch time.
- We encourage you to dress for mess.
- Emerge asks that if a camper is sick or showing signs of becoming sick, that you do not attend camp.

# Allergies, Medications, Accessibility

- If participating children have food allergies, parents are required to fill out the appropriate area on the registration form, denoting the allergy.
- We ask that you please notify the Emerge Gallery & Art Center of any medical conditions or special needs that your child may require. You may include this information on the denoted area on the registration form. We DO NOT allow children to administer medicine to themselves.
- Emerge staff is not responsible or allowed to administer medication to camp participants. In the event that a child requires medication, a parent or guardian must come to administer medications. No exceptions!
- Please, list any medications, including behavioral modification, medications on the denoted area on the registration form.
- Individuals requesting accommodation under the Americans with Disabilities Act (ADA) should contact the Programs Director at paula@emergegallery.com prior to the start of class.



## Activities

---

Please note that we never repeat any project within our summer camp season. While mediums such as pottery, painting, drawing, and mixed media may be listed under several camps as a focus, it is important to understand that we will always be doing different projects with those mediums. Therefore, parents are completely able and encouraged to sign up their children for multiple camps even if similar activities are listed. One of our promises is to offer high quality art education with small class sizes and a lot of one-on-one interaction between a student and instructor.

## Pricing

---

### Full Day Camp

Take both Morning and Afternoon Camps to equal a full day camp! (9am until 4pm)

Emerge members: \$200, Non-members: \$240

### Half Day Camp

Morning (9am until 12pm) or Afternoon (1pm until 4pm)

Emerge members: \$100, Non-members: \$140

### Lunch Bunch Option

If you are doing a half day of camp, but need an extra hour, you may add on our lunch bunch option, for \$5 per day. This does not include lunch, so please bring a bagged lunch.

\*Please note the lunch bunch option has already been added to all full day camp options.

## Member Discount

---

If you are not a member of EmERGE join today and enjoy the benefits of membership. Tax-deductible memberships begin at \$40. Membership Discount: Please note that non-member pricing is the equivalent to member pricing with the addition of purchasing an individual membership. Membership is tax deductible and ensures you will receive discounts on classes for an entire year!

## Sibling Discount

---

The sibling discount will give \$5 off each camp registration, after the first child. The discount is available for siblings enrolling in camps during a single transaction. It CANNOT be transferred or back dated. There are no limits on how many times it can be applied as long as these requirements are met.

## Scholarship

---

A limited number of full and partial scholarships will be available. Scholarships are based on financial need. For more information, to receive a scholarship application, or to donate to our scholarship fund please contact Paula Rountree, Programs Director at EmERGE Gallery & Art Center, via phone (252) 551-6947 or email paula@emergegallery.com.



## Payments and Refunds

---

- Payments must be made in full. Deposits are not accepted!
- There will be NO refunds (full or partial) after 5 days prior to a summer art camp.
- Full refunds are available up to 2 weeks in advance, minus the processing fee of \$20.
- Full refunds must be requested in writing via mail, in person, or via email to [paula@emergegallery.com](mailto:paula@emergegallery.com).
- Partial refunds are available after 2 weeks on a sliding scale up to 5 days prior to class and include the deduction of the processing fee of \$20.
- The scale of what Emerge Gallery & Art Center will retain if a cancellation occurs:
  - 12 - 13 days prior - 10% of enrollment plus the \$20 processing fee
  - 10 - 11 days prior - 20% of enrollment plus the \$20 processing fee
  - 8 - 9 days prior - 30% of enrollment plus the \$20 processing fee
  - 7 days prior - 40% of enrollment plus the \$20 processing fee
  - 6 days prior - 50% of enrollment plus the \$20 processing fee
  - 5 days prior - 60% of enrollment plus the \$20 processing fee**After 5 days prior – no refund is given**
- In the case of emergency, sickness, or similar events, please contact Paula Rountree at Emerge Gallery & Art Center concerning your situation and need of a refund. Each situation is examined on an individual basis. Decisions are made by the Education Committee.
- In the event of any refund, the Emerge Gallery & Art Center will retain a \$20 processing fee.
- Emerge Gallery & Art Center does not offer makeup classes in any form for summer art camp missed due to no fault of our organization. This includes switching camps, classes, or weeks.
- A request to switch a registration from one week/camp to another will incur a \$10 processing fee.

## Registration Policies

---

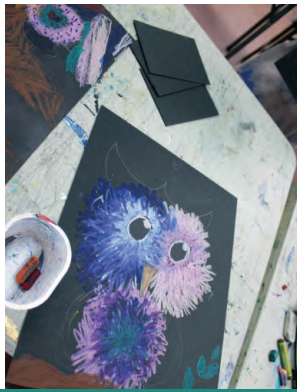
- You must fill out the registration form completely.
- We do not take phone registrations. Space is very limited. Register early!
- Registration is available online, via mail, or in person at our facility.
- We offer online registration. Please visit [www.emergegallery.com](http://www.emergegallery.com) for more information.
- Registrations may be mailed in or delivered in person to:
  - Emerge Gallery & Art Center, 404 Evans Street, Greenville, NC 27858
- Mailed registrations will be recorded by date of receipt.
- Payment may be made by check, cash, or credit card. If paying by credit card on a mailed registration, please fill in the address portion with your billing address as noted on your credit card statement.

## Pick Up Policies

---

- Every person who is allowed to pick up your child, must be listed on the registration form.
- Photo ID may be required to pick up a child.
- There will be a \$5 charge if a child is not picked up within 15 minutes of the conclusion of camp.





## Mini Masters

### Week 1: June 3 - 7

Morning Camp: 9am until 12pm

#### The Wheel Makes the World Go 'Round

Youngsters get lost in the creative process when the pottery wheel begins to spin! Each day will be spent discovering the connection between hands and clay, learning about centering, making vessels, and bowls. They will also be able to paint underglaze on their creations. Time allowing, participants will dive into other techniques as well.

Cost: \$100 for Emerge members, \$140 for non-members  
Reg. Code: MM-01

### Week 2: June 10 - 14

Morning Camp: 9am until 12pm

#### Functional Pots for Tots

Encourage your child to come get their hands dirty making pots they can use in everyday life. Put plants, pencils and many other things in the pot they make, or even give it as a gift! They will decorate them with an array of underglazes making them colorful. They are sure to have a messy and fun time!

Cost: \$100 for Emerge members, \$140 for non-members  
Reg. Code: MM-02

### Week 3: June 17 - 21

Morning Camp: 9am until 12pm

#### Out of This World into UnchARTed Territories

The artwork ahead promises to be fruitful and will enter uncharted territories. Science and art come together for an educational, fun, and creative time exploring the galaxies and star systems, along with various art mediums. They will recreate what they see hands-on, using paint, sculpture, and other mixed media, exploring their creativity as they explore the stars!

Cost: \$100 for Emerge members, \$140 for non-members  
Reg. Code: MM-03



## Did your artist enjoy creating?

We offer weekly youth classes in the fall and spring.  
Check out our full schedule and private lesson options  
at [www.emergegallery.com](http://www.emergegallery.com).

## Week 4: June 24 - 28

Morning Camp: 9am until 12pm

### I Wheely Like Dirt

Encourage your child to come get their hands dirty making pots they can use in everyday life. Put plants, pencils and many other things in the pot they make, or even give it as a gift! They will decorate them with an array of underglazes making them colorful. They are sure to have a messy and fun time!

Cost: \$100 for Emerge members, \$140 for non-members

Reg. Code: MM-04

## Skipping the Week of July 1- 5

---

## Week 5: July 8 - 12

Morning Camp: 9am until 12pm

### Mermaids and Pirates

Arrgh! So you think your child has what it takes to be a pirate? Or mermaid? We will spend days exploring deep waters and the animals that live there. Hold on to your flippers as we dive into clay, sculpture, drawing, painting to create cool under water environments.

Cost: \$100 for Emerge members, \$140 for non-members

Reg. Code: MM-05

## Week 6: July 15 - 19

Morning Camp: 9am until 12pm

### Wild Things

Let creativity run wild as campers create all kinds of animals both real and mythical – from your favorite four legged creatures to fantastical beasts. They will use slab, pinch, and coil techniques to make animal pots, and sculptures as well as houses and habitats for their furry, feathered, or magical friends.

Cost: \$100 for Emerge members, \$140 for non-members

Reg. Code: MM-06

## Week 7: July 22 - 26

Morning Camp: 9am until 12pm

### Mini Monets

Monet was an artist who loved painting nature and understood the effects of light. In this week, your artist will tap into the world of impressionism to create colorful landscapes and still lifes. Through the use of various different mediums, your little one can become an art master too!

Cost: \$100 for Emerge members, \$140 for non-members

Reg. Code: MM-07





## Mini Masters

**Week 8: July 29 - August 2**

Morning Camp: 9am until 12pm

### Art From the Land Down Under

Crikey, mate! Look at the beauty here...nature and art combining. A camp of blokes and chicks learning to build all kinds of animals. Take the crocodile, for example, my favorite animal; 23 species and 17 of those are rare or endangered. Our campers will hunt for unique characteristics of their favorite animal as we create exclusive artworks inspired by wildlife in multiple mediums.

Cost: \$100 for Emerge members, \$140 for non-members

Reg. Code: MM-08

**Week 9: August 5 - 9**

Morning Camp: 9am until 12pm

### Handmade and Wheelturned

It's handmade all the way in this unique multifaceted camp! Campers will work with their hands and clay, wheel throwing, handbuilding, and more! Campers will handbuild work using coil, slab, and molding ceramic techniques, as well as spend time working on the wheel. Time permitting, campers will explore mixed media as well.

Cost: \$100 for Emerge members, \$140 for non-members

Reg. Code: MM-09

**Week 10: August 12 - 16**

Morning Camp: 9am until 12pm

### Creativity stARTs Here

Art has been proven to help children exceed in all other areas of academics. Creativity starts here at Emerge in this unique cross curriculum camp in which academic skills are reinforced through fine art. Children will explore the worlds of clay, painting, drawing, printmaking, and more.

Cost: \$100 for Emerge members, \$140 for non-members

Reg. Code: MM-10





# Dress for a Mess!

and celebrate your next birthday  
with an art party at Emerge!



**Emerge Gallery & Art Center has an exciting way to celebrate  
your child's special day, from toddlers to teenagers!**

Activities include but are not limited to:  
Potters Wheel, Canvas Paintings, Metal Design  
and More!

Questions?

Contact Paula Rountree, Programs Director  
at (252) 551-6947 or [paula@emergegallery.com](mailto:paula@emergegallery.com)

Emerge Gallery & Art Center  
404 Evans Street Greenville, NC 27858  
[www.emergegallery.com](http://www.emergegallery.com)



## Emerging Artists

### Week 1: June 3 - 7

#### Abstract ThINKing

Morning Camp: 9am until 12pm

Immerse your young artists in the world of abstraction, using lots of shapes, forms, colors, and lines! Campers will be introduced to well-known artists to create projects inspired by their works. Activities will include painting, drawing, sketching, mixed media, and more!

Cost: \$100 for Emerge members, \$140 for non-members  
Reg. Code: EA-01

#### Art Studio Explorers

Afternoon Camp: 1pm until 4pm

Explore the world of art through various mediums and activities. Art is about exploring your thoughts and ideas through the use of many artistic mediums. Find out what suits your campers best as they explore multiple mediums like the clay, painting, photography, printmaking, sculpture, and drawing.

Cost: \$100 for Emerge members, \$140 for non-members  
Reg. Code: EA-02

#### All Day Camp

Full Day Camp: 9am until 4pm

Sign up your child for both the morning camp, "Abstract ThINKing" and the afternoon camp "Art Studio Explorers" with this all day option. Lunch bunch is included in all day camp packages. Please be sure to pack a bagged lunch for your child.

Cost: \$200 for Emerge members, \$240 for non-members  
(Number accepted depends upon morning and afternoon enrollment. Register early to ensure your spot.)  
Reg. Code: EA-03

### Week 2: June 10 - 14

#### Four Ps in a Pod

Morning Camp: 9am until 12pm

Immerse your young artists in the world of the masters! Participants will be introduced to well known artists to create project inspired by their works. Activities will include painting, pottery, printmaking, and photography.

Cost: \$100 for Emerge members, \$140 for non-members  
Reg. Code: EA-04





## Budding Artist

Afternoon Camp: 1pm until 4pm

This camp is great for children expressing interests in learning more about fine art and art techniques. Participants will receive in-depth instruction on the basics of fine art and the seven design elements. Then they will learn to apply these elements across several different mediums.

Cost: \$100 for Emerge members, \$140 for non-members

Reg. Code: EA-05

## All Day Camp

Full Day Camp: 9am until 4pm

Sign up your child for both the morning camp, "Four Ps in a Pod" and the afternoon camp "Budding Artist" with this all day option. Lunch bunch is included in all day camp packages. Please be sure to pack a bagged lunch for your child.

Cost: \$200 for Emerge members, \$240 for non-members

(Number accepted depends upon morning and afternoon enrollment. Register early to ensure your spot.)

Reg. Code: EA-06



## Week 3: June 17 - 21

### Clay the Day Away

Morning Camp: 9am until 12pm

In this pottery themed camp students will be creating a whole dining set for themselves, including one plate, one bowl, and one cup! Some of the artwork will be wheel thrown and some will be handbuilt. All of pieces will have some surface decoration and underglaze to make them slightly match so they appear as a set.

Cost: \$100 for Emerge members, \$140 for non-members

Reg. Code: EA-07

### Photo-tastic

Afternoon Camp: 1pm until 4pm

Campers will learn the basics of photography in this fun camp. Campers will experience photography in multiple ways through alternative photography including cyanotype t-shirts and mixed media utilizing photography by assembling multiple images and materials. Campers will learn photography processes, some with, and some without cameras. No special equipment is needed for this camp. Emerge will supply point-and-shoot cameras for projects that require them.

Cost: \$100 for Emerge members, \$140 for non-members

Reg. Code: EA-08



## All Day Camp

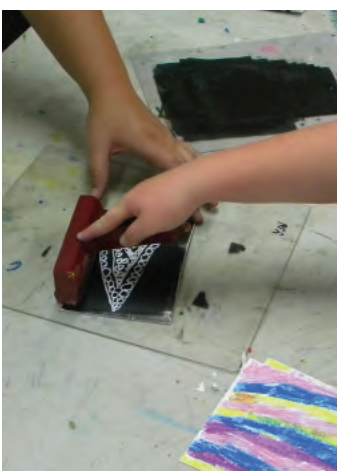
Full Day Camp: 9am until 4pm

Sign up your child for both the morning camp, "Clay the Day Away" and the afternoon camp "Photo-tastic" with this all day option. Lunch bunch is included in all day camp packages. Please be sure to pack a bagged lunch for your child.

Cost: \$200 for Emerge members, \$240 for non-members

(Number accepted depends upon morning and afternoon enrollment. Register early to ensure your spot.)

Reg. Code: EA-09



## Did your artist enjoy creating?

We offer weekly youth classes in the fall and spring. Check out our full schedule and private lesson options at [www.emergegallery.com](http://www.emergegallery.com).





## Emerging Artists

### Week 4: June 24 - 28

#### Contemporary Masterpieces

Morning Camp: 9am until 12pm

Contemporary art is a dynamic combo of materials, method, and concepts. Campers will use mediums such as clay, painting, photography, and sculpture to study fascinating techniques used by famous modern artists to create their own modern masterpieces.

Cost: \$100 for Emerge members, \$140 for non-members

Reg. Code: EA-10

#### Crazy CaARToons

Afternoon Camp: 1pm until 4pm

We want to encourage campers to go crazy creating their very own fictional characters. Students will work independently designing their own cartoons, comic strips, and flip art books. We can't wait to see what kookie creations the students come up with!

Cost: \$100 for Emerge members, \$140 for non-members

Reg. Code: EA-11

#### All Day Camp

Full Day Camp: 9am until 4pm

Sign up your child for both the morning camp, "Contemporary Masterpieces" and the afternoon camp "Crazy cARToons" with this all day option. Lunch bunch is included in all day camp packages. Please be sure to pack a bagged lunch for your child.

Cost: \$200 for Emerge members, \$240 for non-members

(Number accepted depends upon morning and afternoon enrollment. Register early to ensure your spot.)

Reg. Code: EA-12

### Skipping the Week of July 1-5

---

### Week 5: July 8 - 12

#### Versatile Textiles

Morning Camp: 9am until 12pm

Let your children make their own impression in this world! Silk painting is a very unique craft. The ink used soaks into the silk, providing ample opportunities to try different techniques and patterns. Students will also explore various fabric activities including sewing, fabric collages, and more. Campers walk away having learned something valuable, and have a beautiful piece of art to show for it.

Cost: \$100 for Emerge members, \$140 for non-members

Reg. Code: EA-13



## Prehistoric ARTifacts

Afternoon Camp: 1pm until 4pm

Clay vessels were made and used long before the invention of the wheels. This camp will explore pottery through the handbuilding techniques of coiling, slab construction, and pinching. Campers will also learn about interesting patterns and surface techniques to finish their pots.

Cost: \$100 for Emerge members, \$140 for non-members

Reg. Code: EA-14

## All Day Camp

Full Day Camp: 9am until 4pm

Sign up your child for both the morning camp, "Versatile Textiles" and the afternoon camp "Prehistoric ARTifacts" with this all day option. Lunch bunch is included in all day camp packages. Please be sure to pack a bagged lunch for your child.

Cost: \$200 for Emerge members, \$240 for non-members

(Number accepted depends upon morning and afternoon enrollment. Register early to ensure your spot.)

Reg. Code: EA-15



## Week 6: July 15 - 19

### Imagination Engineers

Morning Camp: 9am until 12pm

We raided the art supply cabinet and are ready to make art out of practically everything! Campers will use a variety of techniques and media to create fun and unique works of art inspired by daily gallery visits. Paint, print, collage, weave, and build 3-D sculptures. The possibilities are endless!

Cost: \$100 for Emerge members, \$140 for non-members

Reg. Code: EA-16



### All Fired Up!

Afternoon Camp: 1pm until 4pm

During this camp, your child will start their wheels and there begins an instant passion for pottery. They will explore wheel work and handbuilding as they concentrate on the basic skills and fundamentals of clay. When they come home each day they will be fired up with stories of class.

Cost: \$100 for Emerge members, \$140 for non-members

Reg. Code: EA-17

### All Day Camp

Full Day Camp: 9am until 4pm

SSign up your child for both the morning camp, "Imagination Engineers" and the afternoon camp "All Fired Up!" with this all day option. Lunch bunch is included in all day camp packages. Please be sure to pack a bagged lunch for your child.

Cost: \$200 for Emerge members, \$240 for non-members

(Number accepted depends upon morning and afternoon enrollment. Register early to ensure your spot.)

Reg. Code: EA-18





## Emerging Artists

### Week 7: July 22- 26

#### Caked with Mud

Morning Camp: 9am until 12pm

Does your child love pottery? Let your camper get their hands dirty this week as we dive into the clay studio! They will learn how to throw on the potter's wheel and construct clay sculptures while learning techniques such as coiling, slabs, glazing, and molding. We will no doubt have a messy good time, but don't worry, it washes out!

Cost: \$100 for Emerge members, \$140 for non-members  
Reg. Code: EA-19

#### Stroke of Genius

Afternoon Camp: 1pm until 4pm

Immerse your young artist in the world of the masters! Campers will be introduced to well-known artists and create projects inspired by their works. Activities will include painting, drawing, sketching, and mixed media! They will also learn the implements of S.T.E.A.M. and how art can relate to other school subjects.

Cost: \$100 for Emerge members, \$140 for non-members  
Reg. Code: EA-20

#### All Day Camp

Full Day Camp: 9am until 4pm

Sign up your child for both the morning camp, "Caked with Mud" and the afternoon camp "Stroke of Genius" with this all day option. Lunch bunch is included in all day camp packages. Please be sure to pack a bagged lunch for your child.

Cost: \$200 for Emerge members, \$240 for non-members  
(Number accepted depends upon morning and afternoon enrollment. Register early to ensure your spot.)  
Reg. Code: EA-21

### Week 8: July 29 - August 2

#### Metallic Madness

Morning Camp: 9am until 12pm

Metallic Madness is perfect for any child that loves the shiny world of art! Campers will work on a variety of projects including wearables, key chains, money clips, and small sculptures. Older participants will get to experience the metal design studio as they learn how real metalsmiths work, while trying it for themselves.

Cost: \$100 for Emerge members, \$140 for non-members  
Reg. Code: EA-22





## Summer Sculptor

Afternoon Camp: 1pm until 4pm

Let your camper get their hands dirty this summer and have a great time doing it! Participants in this sculpting camp will work on coil, slab, and molding ceramic techniques, as well as spend time working on the wheel. They will learn surface decoration processes and spend more of their time handbuilding.

Cost: \$100 for Emerge members, \$140 for non-members

Reg. Code: EA-23

## All Day Camp

Full Day Camp: 9am until 4pm

Sign up your child for both the morning camp, "Metallic Madness" and the afternoon camp "Summer Sculptor" with this all day option. Lunch bunch is included in all day camp packages. Please be sure to pack a bagged lunch for your child.

Cost: \$200 for Emerge members, \$240 for non-members

(Number accepted depends upon morning and afternoon enrollment. Register early to ensure your spot.)

Reg. Code: EA-24



## Week 9: August 5 - 9

### Eco Art

Morning Camp: 9am until 12pm

Sometimes you don't have to look far to find inspiration! Learn about artists like Robert Rauschenberg, Marcel Duchamp and Julian Schnabel who became famous for using broken, found, and everyday objects in their artwork. In this camp, participants will up-cycle common items into spectacular art of your own through assembly, painting and sculpture.

Cost: \$100 for Emerge members, \$140 for non-members

Reg. Code: EA-25

### Pop, Paper, Scissors!

Afternoon Camp: 1pm until 4pm

POP IT GOES! This camp is all about making it POP! Pop-up books, awesome art and science experiments, and the creation of an erupting volcano. They will also learn the implements of S.T.E.A.M. and how art can relate to other school subjects.

Cost: \$100 for Emerge members, \$140 for non-members

Reg. Code: EA-26

## All Day Camp

Full Day Camp: 9am until 4pm

Sign up your child for both the morning camp, "Eco Art" and the afternoon camp "Pop, Paper, Scissors!" with this all day option. Lunch bunch is included in all day camp packages. Please be sure to pack a bagged lunch for your child.

Cost: \$200 for Emerge members, \$240 for non-members

(Number accepted depends upon morning and afternoon enrollment. Register early to ensure your spot.)

Reg. Code: EA-27





## Emerging Artists

### Week 10: August 12 - 16

#### Grease the Wheels

Morning Camp: 9am until 12pm

It's time to rev those engines and grease the wheels with loads of clay! Campers will spend most of their camp on the wheel throwing pots. They will also learn some coil, molding techniques, and use underglazes to enhance their artwork.

Cost: \$100 for Emerge members, \$140 for non-members  
Reg. Code: EA-28

#### Petite Picassos and Pollocks

Afternoon Camp: 1pm until 4pm

Campers will create original artwork based on techniques of the well-known artists Pablo Picasso and Jackson Pollock. Students will explore mediums such as clay, watercolor, paint, pastels, as well as a variety of multimedia elements.

Cost: \$100 for Emerge members, \$140 for non-members  
Reg. Code: EA-29

#### All Day Camp

Full Day Camp: 9am until 4pm

Sign up your child for both the morning camp, "Grease the Wheels" and the afternoon camp "Petite Picassos and Pollocks" with this all day option. Lunch bunch is included in all day camp packages. Please be sure to pack a bagged lunch for your child.

Cost: \$200 for Emerge members, \$240 for non-members  
(Number accepted depends upon morning and afternoon enrollment. Register early to ensure your spot.)  
Reg. Code: EA-30

Emerging Artists: Grade 1-5



## Don't forget your membership!

Join for the first time, renew to keep receiving benefits,  
or increase your member level.

Visit <https://www.emergallery.com/support/memberships>

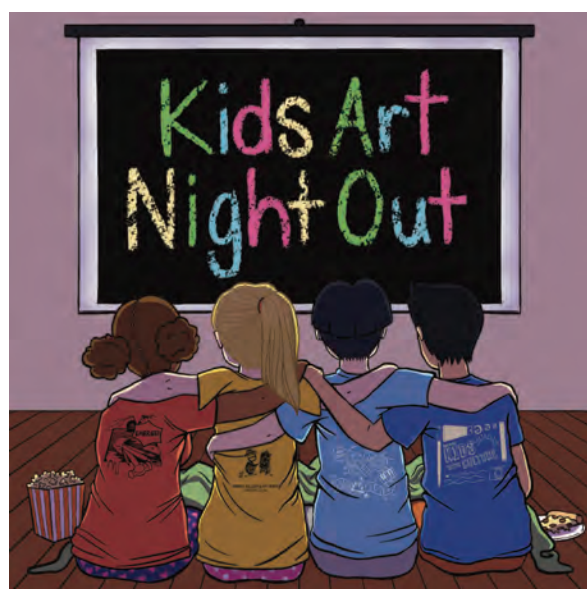




We will be offering our Pop In Pop Art workshops one Saturday a month starting at 1:00pm. Community members are able to pop in for a 20-25 minute lesson for \$15. Workshops are available for children as young as age three and adults of all ages. Walk-ins are welcome and encouraged.

Workshop Times:  
1:00pm - 1:25pm, 1:45pm - 2:10pm,  
2:30pm - 2:55pm

Kids' Art Night Out provides parents an opportunity to have a night out on the town, or enjoy a quiet evening in, while their children enjoy a fun night at Emerge Gallery & Art Center! Kids will enjoy a pizza dinner and a variety of art activities! Kids are encouraged to wear comfy clothes, and bring a blanket or sleeping bag, and a pillow for movie time. All films shown are PG or G rated. Open to ages 5 and up.



Spend a little quality time with the ones you love by creating something together! This returning monthly series invites families to create art side by side in a different medium each month! These two hour workshops provide a fun and rewarding time for parents, grandparents, big brothers and big sisters to work with a young person while exploring new materials and creating projects as a team.

## Youth Programming

Visit <https://www.emergegallery.com/education> for more information!





## Advanced Youth

### Week 1: June 3 - 7

#### Elements of Design

Morning Camp: 9am until 12pm

Campers will focus on the seven elements of design – space, shape, form, texture, line, color, and value. They will learn how to combine the elements in a successful manner, while delving into various mediums such as pen and ink, acrylics, watercolor, and drawing!

Cost: \$100 for Emerge members, \$140 for non-members  
Reg. Code: AY-01

#### Makers Gonna Make

Afternoon Camp: 1pm until 4pm

Having trouble deciding which medium is best for your child? Then this camp is for them! Students will explore a wide variety of mediums, including drawing, painting, printmaking, and handbuilding with clay.

Cost: \$100 for Emerge members, \$140 for non-members  
Reg. Code: AY-02

#### All Day Camp

Full Day Camp: 9am until 4pm

Sign up your child for both the morning camp, “Elements of Design” and the afternoon camp “Makers Gonna Make” with this all day option. Lunch bunch is included in all day camp packages. Please be sure to pack a bagged lunch for your child.

Cost: \$200 for Emerge members, \$240 for non-members  
(Number accepted depends upon morning and afternoon enrollment. Register early to ensure your spot.)  
Reg. Code: AY-03

### Week 2: June 10 - 14

#### Cameras, and Photos, and Film...Oh My!

Morning Camp: 9am until 12pm

This camp teaches the basics of black and white photography and digital photography. Techniques including composition, exposure, film processing, darkroom techniques, and Adobe Photoshop. No special equipment is required. If students wish to bring their own camera (any point and shoot), this is fine. Emerge also has point and shoot cameras available for use.

Cost: \$100 for Emerge members, \$140 for non-members  
Reg. Code: AY-04



## Dali in Dough

Afternoon Camp: 1pm until 4pm

Dali was an imaginative artist, similar to your very own camper. Your artist will tap into the world of surrealism to create dream like ceramics. They will learn several aspects and techniques for both hand building and the wheel.

**Cost: \$100 for Emerge members, \$140 for non-members**  
**Reg. Code: AY-05**

## All Day Camp

Full Day Camp: 9am until 4pm

Sign up your child for both the morning camp, "Cameras, and Photos, and Film...Oh My!" and the afternoon camp "Dali in Dough" with this all day option. Lunch bunch is included in all day camp packages. Please be sure to pack a bagged lunch for your child.

**Cost: \$200 for Emerge members, \$240 for non-members**

(Number accepted depends upon morning and afternoon enrollment. Register early to ensure your spot.)

**Reg. Code: AY-06**



## Week 3: June 17 - 21

### Fit for a King

Morning Camp: 9am until 12pm

Charming and Cinderella need a new ensemble for the ball! Let your camper make their own apparel and accessories to wear for the King and Queen. Students will explore various fabric activities including sewing, fabric collages, and silk painting. Silk painting techniques provide ample opportunities to try different looks and patterns of royalty.

**Cost: \$100 for Emerge members, \$140 for non-members**

**Reg. Code: AY-07**



### Let There Be Light

Afternoon Camp: 1pm until 4pm

This is a camp for students who love to draw and paint. We will study value and light and how to achieve three-dimensionality through their use. Value is such an important element of art to learn making images appear to jump off the canvas, really taking your child's artwork to the next level.

**Cost: \$100 for Emerge members, \$140 for non-members**

**Reg. Code: AY-08**

## All Day Camp

Full Day Camp: 9am until 4pm

Sign up your child for both the morning camp, "Fit for a King" and the afternoon camp "Let There Be Light" with this all day option. Lunch bunch is included in all day camp packages. Please be sure to pack a bagged lunch for your child.

**Cost: \$200 for Emerge members, \$240 for non-members**

(Number accepted depends upon morning and afternoon enrollment. Register early to ensure your spot.)

**Reg. Code: AY-09**





## Advanced Youth

### Week 4: June 24 - 28

#### Pixel Perfect

Morning Camp: 9am until 12pm

This intro level camp shows campers the basics in graphic design and teaches students how graphic design is a form of visual communication through the use of type, image, form, and color. Your camper does not have to be a computer tech in order to enjoy this artistic camp.

Cost: \$100 for Emerge members, \$140 for non-members

Reg. Code: AY-10

#### Paleo Pottery

Afternoon Camp: 1pm until 4pm

Clay vessels were made and used long before the invention of the wheel. This camp will explore pottery through some of the oldest and still traditional hand-building techniques of coiling, slab construction, and pinching. Campers will also dabble in some surface decoration and paint on their pots with underglazes.

Cost: \$100 for Emerge members, \$140 for non-members

Reg. Code: AY-11

#### All Day Camp

Full Day Camp: 9am until 4pm

Sign up your child for both the morning camp, "Pixel Perfect" and the afternoon camp "Paleo Potter" with this all day option. Lunch bunch is included in all day camp packages. Please be sure to pack a bagged lunch for your child.

Cost: \$200 for Emerge members, \$240 for non-members

(Number accepted depends upon morning and afternoon enrollment. Register early to ensure your spot.)

Reg. Code: AY-12

### Skipping the Week of July 1 - 5

---

### Week 5: July 8 - 12

#### Pot of Gold

Morning Camp: 9am until 12pm

Review basic wheel throwing techniques, and explore how to make shapes other than the typical round forms made on the potter's wheel. Create ovals, squares, and fun funky shapes! Experiment with stacking, stretching, and cutting wheel thrown forms to create your own pot of gold.

Cost: \$100 for Emerge members, \$140 for non-members

Reg. Code: AY-13





## A Splash of Color

Afternoon Camp: 1pm until 4pm

Acrylic and watercolor are both painting mediums, but are very different from each other! Campers will work with instructors to relay their creative ideas into works of art on canvas and watercolor paper! Students with previous experience will work with instructors to problem solve and refine their skills.

Cost: \$100 for Emerge members, \$140 for non-members

Reg. Code: AY-14

## All Day Camp

Full Day Camp: 9am until 4pm

Sign up your child for both the morning camp, "A Pot of Gold" and the afternoon camp "A Splash of Color" with this all day option. Lunch bunch is included in all day camp packages. Please be sure to pack a bagged lunch for your child.

Cost: \$200 for Emerge members, \$240 for non-members

(Number accepted depends upon morning and afternoon enrollment. Register early to ensure your spot.)

Reg. Code: AY-15



## Week 6: July 15 - 19

### Red Hot Enameling

Morning Camp: 9am until 12pm

Five days of learning and creating in metal! Enameling is a centuries old technique of fusing glass to metal. Campers will also learn the basics of metal design including sawing, forming, filing, and texturing. The type of work that could be made include, but is not limited to, jewelry, key chains, and small sculptures.

Cost: \$100 for Emerge members, \$140 for non-members

Reg. Code: AY-16

### Me, Myself, and I

Afternoon Camp: 1pm until 4pm

Many artists, including Vincent Van Gogh and Frieda Kahlo, have famously painted self-portraits. This camp is designed for young artists who want to learn to draw and paint faces as well as learn something about themselves.

Cost: \$100 for Emerge members, \$140 for non-members

Reg. Code: AY-17

### All Day Camp

Full Day Camp: 9am until 4pm

Sign up your child for both the morning camp, "Red Hot Enameling" and the afternoon camp "Me, Myself, and I" with this all day option. Lunch bunch is included in all day camp packages. Please be sure to pack a bagged lunch for your child.

Cost: \$200 for Emerge members, \$240 for non-members

(Number accepted depends upon morning and afternoon enrollment. Register early to ensure your spot.)

Reg. Code: AY-18



## Did your artist enjoy creating?

We offer weekly youth classes in the fall and spring.  
Check out our full schedule and private lesson options  
at [www.emergegallery.com](http://www.emergegallery.com).



## Advanced Youth

### Week 7: July 22- 26

#### think Tank

Campers will learn to draw from both life and photos. Drawing is a way of communicating and seeing the world that surrounds us. This class, taught by a working artist, will help students learn the principles of design, perspective, and composition. Also, campers will learn printmaking techniques to reproduce their drawings.

Morning Camp: 9am until 12pm

Cost: \$100 for Emerge members, \$140 for non-members  
Reg. Code: AY-19

#### Good Dirt for the Garden

This class will take clay through a full life cycle from the ground, to hands, to kiln, and back into your garden. Campers will utilize clay as they create one-of-a-kind, complex sculptures with a variety of handbuilding techniques and under glaze applications. Participants will create unique garden ornaments, and fun things to decorate the yard with.

Afternoon Camp: 1pm until 4pm

Cost: \$100 for Emerge members, \$140 for non-members  
Reg. Code: AY-20

#### All Day Camp

Sign up your child for both the morning camp, "think Tank" and the afternoon camp "Good Dirt for the Garden" with this all day option. Lunch bunch is included in all day camp packages. Please be sure to pack a bagged lunch for your child.

Full Day Camp: 9am until 4pm

Cost: \$200 for Emerge members, \$240 for non-members  
(Number accepted depends upon morning and afternoon enrollment. Register early to ensure your spot.)  
Reg. Code: AY-21

### Week 8: July 29 - August 2

#### Turn and Burn

It is true that the potter's wheel is mesmerizing. This camp is for students who want intensive time on the potter's wheel. With instruction on centering, pulling, trimming, finishing, glazing, and kiln science. Campers will also discuss the implements of S.T.E.A.M. and how art can relate to other school subjects.

Morning Camp: 9am until 12pm

Cost: \$100 for Emerge members, \$140 for non-members  
Reg. Code: AY-22



## ARTificial Intelligence

Afternoon Camp: 1pm until 4pm

Campers will get a chance to feed their creative appetite while exploring all aspects of art and finding innovative ways to link art to science. They will also discuss the implements of S.T.E.A.M. and how art can relate to other school subjects. Each day will feature a new medium.

Cost: \$100 for Emerge members, \$140 for non-members

Reg. Code: AY-23

## All Day Camp

Full Day Camp: 9am until 4pm

Sign up your child for both the morning camp, "Turn and Burn" and the afternoon camp "ARTificial Intelligence" with this all day option. Lunch bunch is included in all day camp packages. Please be sure to pack a bagged lunch for your child.

Cost: \$200 for Emerge members, \$240 for non-members

(Number accepted depends upon morning and afternoon enrollment. Register early to ensure your spot.)

Reg. Code: AY-24



## Week 9: August 5 - 9

### Midas Metals

Morning Camp: 9am until 12pm

This camp is Metal Design 101 for those wanting to turn their art skills to gold! Campers will work alongside Midas to acquire the golden touch, creating exceptional sculptures using metal design techniques including soldering and cold connections.

Cost: \$100 for Emerge members, \$140 for non-members

Reg. Code: AY-25



### À la cARTE

Afternoon Camp: 1pm until 4pm

It is time to create our favorite meal in mud! Campers will utilize clay as they create food sculptures utilizing a variety of handbuilding techniques and glazing applications. Students will create a meal and table setting for themselves.

Cost: \$100 for Emerge members, \$140 for non-members

Reg. Code: AY-26

## All Day Camp

Full Day Camp: 9am until 4pm

Sign up your child for both the morning camp, "Midas Metals" and the afternoon camp "À la cARTE" with this all day option. Lunch bunch is included in all day camp packages. Please be sure to pack a bagged lunch for your child.

Cost: \$200 for Emerge members, \$240 for non-members

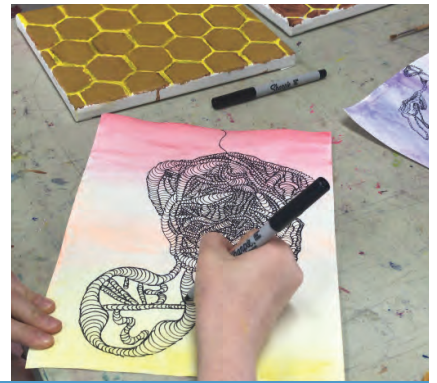
(Number accepted depends upon morning and afternoon enrollment. Register early to ensure your spot.)

Reg. Code: AY-27



**Don't forget your membership!**  
Join for the first time, renew to keep receiving benefits, or increase your member level.





# Advanced Youth

## Week 10: August 12 - 16

### As Smooth as Silk

Morning Camp: 9am until 12pm

Silk painting is a unique craft, and this camp will provide ample opportunities to try different techniques and patterns. Students will learn the relationship between ink and silk, and a well-constructed lesson can provide the necessary guidance for nurturing their creativity. Campers walk away having learned something new, and have beautiful pieces of art to show for it.

Cost: \$100 for Emerge members, \$140 for non-members

Reg. Code: AY-28

### A Fine Line

Afternoon Camp: 1pm until 4pm

Drawing is a way of communicating and seeing the world that surrounds us. This class will help campers learn the principles of design, perspective, and composition. Each class will focus on a specific demonstration, strategies, and group sharing of work will be encouraged.

Cost: \$100 for Emerge members, \$140 for non-members

Reg. Code: AY-29

### All Day Camp

Full Day Camp: 9am until 4pm

Sign up your child for both the morning camp, "As Smooth as Silk" and the afternoon camp "A Fine Line" with this all day option. Lunch bunch is included in all day camp packages. Please be sure to pack a bagged lunch for your child.

Cost: \$200 for Emerge members, \$240 for non-members

(Number accepted depends upon morning and afternoon enrollment. Register early to ensure your spot.)

Reg. Code: AY-30



# Parents can make art too! Adult Classes and Workshops



Daytime Classes available in the Spring and Fall Session Schedule.  
Evening Classes available all year around.

We offer weekly classes in painting, drawing, ceramics, pottery, mixed media, metal design and jewelry! Classes typically meet once a week for six weeks. Most adult level classes are open to ages 16 and up.

Painting and Drawing • Metal Design and Jewelry • Bookmaking  
Pottery: Handbuilding and Wheelthrowing

Visit [www.emergegallery.com/education](http://www.emergegallery.com/education)  
for more information about classes and workshops



Make plans to join us for Emerge's Adult Workshop Series that uses artistic fun as a great excuse to have a night out! Grab your friends and join us for a wonderful art project while enjoying a glass of wine! No experience is necessary, but a willingness to have fun is!



These workshops are available to those who are interested in learning a specific technique in their artform and are looking for assistance in getting there. We hope to offer these workshops in a variety of mediums and would love to hear what you would like to see.



MAKE-N-TAKE STAINED GLASS WORKSHOP

You will learn safety, technique, and go home with a piece you made the very same day! There will be a variety of designs to choose. All supplies are included.

# Membership Form

## Support Your Local Arts Council and Save!



I would like to sign up for the following:  
(Please check the membership of your choice.)

- |                          |   |
|--------------------------|---|
| <input type="checkbox"/> | <b>Senior 65+/Student</b> (\$25)<br>PCC and ECU emails only |
| <input type="checkbox"/> | <b>Individual</b> (\$40)                                    |
| <input type="checkbox"/> | <b>Family</b> (\$65)  |
| <input type="checkbox"/> | <b>Donor</b> (\$150)  |
| <input type="checkbox"/> | <b>Sponsor</b> (\$250)                                      |
| <input type="checkbox"/> | <b>Patron</b> (\$500)                                       |
| <input type="checkbox"/> | <b>Benefactor</b> (\$1,000)                                 |

Thank you for your support of Emerge Gallery & Art Center,  
home of the Pitt County Arts Council.  
Emerge Gallery & Art Center is a 501(c)(3)  
non-profit organization. Your donation is tax deductible.

Date \_\_\_\_\_

Name \_\_\_\_\_

Address \_\_\_\_\_  
\_\_\_\_\_

City/State/Zip \_\_\_\_\_

Phone \_\_\_\_\_

E-mail \_\_\_\_\_

If Applicable:

Spouse's Name \_\_\_\_\_

Child(ren)'s Name(s) \_\_\_\_\_  
\_\_\_\_\_

If individual member is under 18:

Parent/Guardian \_\_\_\_\_

404 Evans St. Greenville, NC 27858  
(252) 551-6947 | info@emergegallery.com | www.emergegallery.com



# MEMBERSHIP BENEFITS

Become a part of Emerge Gallery & Art Center and help support this non-profit art center. Members are an active part of Emerge and benefits are growing everyday. Memberships are renewed yearly.

### Senior Citizens and College Students \$25

Benefits for Seniors 65 years and older and ECU and PCC students with valid ID include monthly mailings, discounts on classes and workshops for the individual, seasonal newsletter, invitation to members' only events and free admission to select special events.

### Individual \$40

Benefits include monthly mailings, discounts on classes and workshops for the individual, a seasonal newsletter, invitation to members' only events and free admission to select special events.

### Family \$65

Benefits include monthly mailings, discounts on classes and workshops for the immediate family, a seasonal newsletter, invitation to members' only events and free admission to select special events.

### Donor \$150

Benefits include monthly mailings, 5% off sales gallery when mentioned, discounts on classes and workshops for the entire family, a seasonal newsletter, invitation to members' only events and free admission to select special events.

### Sponsor \$250

Benefits include monthly mailings, 10% off in sales gallery when mentioned, discounts on classes and workshops for the entire family, a seasonal newsletter, invitation to members' only events and free admission to select special events.

### Patron \$500

Benefits include monthly mailings, 10% off in sales gallery when mentioned, discounts on classes and workshops for the entire family, a seasonal newsletter, invitation to members' only events, free admission to select special events, and one free two hour rental of the gallery.

### Benefactor \$1,000

Benefits include monthly mailings, 15% off in sales gallery when mentioned, discounts on classes and workshops for the entire family, a seasonal newsletter, invitation to members' only events, free admission to select special events, and one free four hour rental of the gallery.



Home of the Pitt County Arts Council

# MEMBERSHIPS



# Child One Information

Child's Name: \_\_\_\_\_ Age: \_\_\_\_\_ Birthday: \_\_\_\_\_

Grade child will be in 24/25 school year: \_\_\_\_\_ Child's School: \_\_\_\_\_

Does your child have a disability and/or require accommodations in order to fully participate? Please indicate those needs here:

List any allergies that your child has:

List any medications, including behavioral modification that your child is taking:

Please note we cannot administer medication. \*Please notify us if you have recently changed your child's behavioral medication.

# Camp Information

1st Camp: \_\_\_\_\_ Camp Code: \_\_\_\_\_ Price: \_\_\_\_\_

2nd Camp: \_\_\_\_\_ Camp Code: \_\_\_\_\_ Price: \_\_\_\_\_

3rd Camp: \_\_\_\_\_ Camp Code: \_\_\_\_\_ Price: \_\_\_\_\_

4th Camp: \_\_\_\_\_ Camp Code: \_\_\_\_\_ Price: \_\_\_\_\_

# Child Two Information

Child's Name: \_\_\_\_\_ Age: \_\_\_\_\_ Birthday: \_\_\_\_\_

Grade child will be in 24/25 school year: \_\_\_\_\_ Child's School: \_\_\_\_\_

Does your child have a disability and/or require accommodations in order to fully participate? Please indicate those needs here:

List any allergies that your child has:

List any medications, including behavioral modification that your child is taking:

Please note we cannot administer medication. \*Please notify us if you have recently changed your child's behavioral medication.

# Camp Information

1st Camp: \_\_\_\_\_ Camp Code: \_\_\_\_\_ Price: \_\_\_\_\_

2nd Camp: \_\_\_\_\_ Camp Code: \_\_\_\_\_ Price: \_\_\_\_\_

3rd Camp: \_\_\_\_\_ Camp Code: \_\_\_\_\_ Price: \_\_\_\_\_

4th Camp: \_\_\_\_\_ Camp Code: \_\_\_\_\_ Price: \_\_\_\_\_

# Parent Information

Parent 1/Guardian's Name: \_\_\_\_\_ E-mail: \_\_\_\_\_

Phone (H) \_\_\_\_\_ (W) \_\_\_\_\_ (C) \_\_\_\_\_

Address: \_\_\_\_\_ City: \_\_\_\_\_ State: \_\_\_\_\_ Zip Code: \_\_\_\_\_

Parent 2/Guardian's Name: \_\_\_\_\_ E-mail: \_\_\_\_\_

Phone (H) \_\_\_\_\_ (W) \_\_\_\_\_ (C) \_\_\_\_\_

Address: \_\_\_\_\_ City: \_\_\_\_\_ State: \_\_\_\_\_ Zip Code: \_\_\_\_\_

# Emergency

For immediate questions/emergencies (circle all that apply)  
Emergency other than parent/guardian:

Parent 1/Guardian

Parent 2/Guardian

Name: \_\_\_\_\_ Relationship: \_\_\_\_\_ Phone: \_\_\_\_\_

Name: \_\_\_\_\_ Relationship: \_\_\_\_\_ Phone: \_\_\_\_\_

Name: \_\_\_\_\_ Relationship: \_\_\_\_\_ Phone: \_\_\_\_\_

# Pick Up

Who will pick up your child from camp? (circle all that apply)

Parent 1/Guardian

Parent 2/Guardian

Emergency Contact

Pick up other than parents/guardians:

Name: \_\_\_\_\_ Phone (H) \_\_\_\_\_ (C) \_\_\_\_\_

Name: \_\_\_\_\_ Phone (H) \_\_\_\_\_ (C) \_\_\_\_\_

Name: \_\_\_\_\_ Phone (H) \_\_\_\_\_ (C) \_\_\_\_\_

# Waiver of Liability

In consideration for Emerge Gallery & Art Center making programs available to myself or my child, I here-by release Emerge Gallery & Art Center, its employees, volunteers, instructors, and agents from any and all liability, cost/expense associated with any injury or illness that I or my child may sustain while participating in any of the programs and activities. I voluntarily agree to assume all of the foregoing risks and accept sole responsibility for any injury to myself (including, but not limited to, personal injury, disability, and death), illness, damage, loss, claim, liability, or expense, of any kind, that I may experience or incur in connection with me or my child's attendance at Emerge Gallery & Art Center or participation in Emerge Gallery & Art Center programming. In case I cannot be reached in an Emergency, I give my permission to the Emerge Gallery & Art Center to select proper Emergency care and treatment for my child or myself. Furthermore, I hereby hold Emerge Gallery & Art Center, its employees, volunteers, instructors, and agents harmless for any damage, loss, or claims to my person, child, or property. I understand that payment must be made in full. I agree to the refund policy stated in the class booklet in the event of a refund request. Refunds are possible up to one week prior to class. No refunds 5 days prior.

I agree to the Emerge Gallery & Art Center photographing my child and using it in promotional materials and posts to social media including Facebook, Instagram, Pinterest, and/or Twitter.

Yes

No

Signature of parent or legal guardian: \_\_\_\_\_

Date: \_\_\_\_\_

Please remember to mark your calendar! We send email confirmations only!

With questions or for enrollment information,  
please contact Paula Rountree at Emerge Gallery & Art Center  
paula@emergegallery.com -- (252) 551-6947