

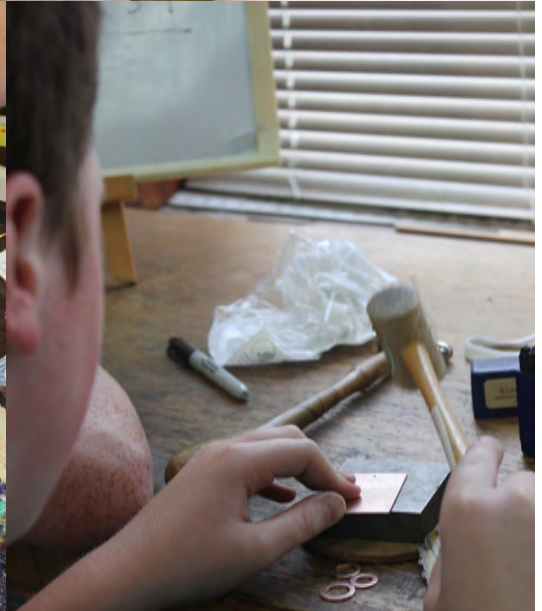
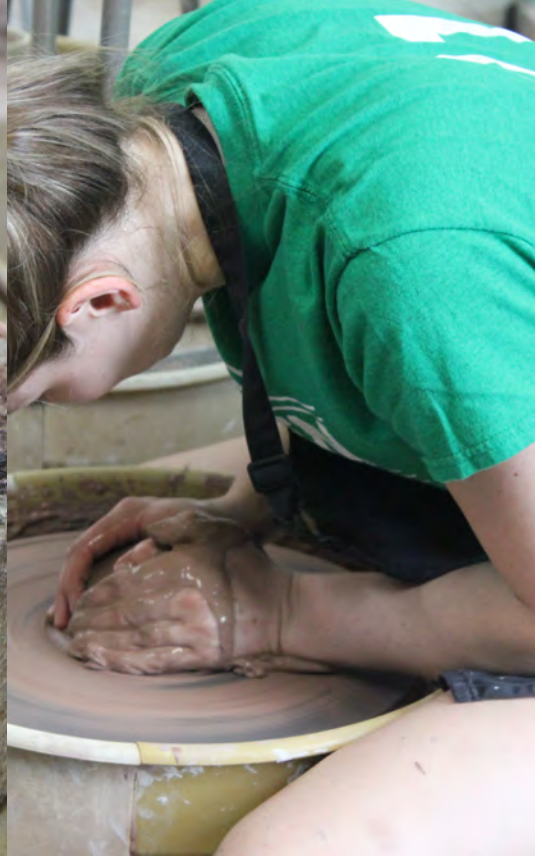
Classes and Workshops



emerge

GALLERY &
ART CENTER

Home of the Pitt County Arts Council



Adult and Youth Schedule: September - December

404 Evans Street | Greenville, NC 27858 | (252) 551-6947
info@emergegallery.com | www.emergegallery.com

Mission Statement:

Emerge Gallery & Art Center is a non-profit organization dedicated to enhancing the quality of life in Pitt County by promoting artists and arts organizations, educating through the arts, and making the arts accessible to the entire community.

Contact Us:

404 Evans Street | Greenville, NC 27858
(252) 551-6947
info@emergegallery.com | www.emergegallery.com



Community Outreach

Part of the Emerge Gallery & Art Center’s mission is to make the arts accessible to the entire community. For every five paid programs, one is completely free. We do this through art programs geared towards those affected by cancer in the hospital, artist in residency programs, and our Youth Arts Initiative program, which includes scholarships and our Youth Public Arts Project.

Youth Public Arts Project is our longest running outreach program. Started in 2005, this is a bi-monthly program, where youth come to Emerge Gallery & Art Center to work with professional artists and musicians to create various public art projects and learn about the rich heritage of African American music. The public art is then displayed throughout the community.

Art is Good Medicine is an Arts in Healthcare program in partnership with ECU Health and the McConnell-Raab Hope Lodge. Professional visual artists work with adults in the ECU Health Cancer Center, along with the McConnell-Raab Hope Lodge, and pediatric patients in the Maynard Children’s Hospital. In addition, we facilitate free adult workshops at the ECU Health Cancer Center.

Scholarships are available to our community in need to attend classes free of charge.

Please contact Paula Rountree, Programs Director at paula@emergegallery.com for more information.

General Information

Community Outreach	page 2
Policies and Procedures	page 3

Classes and More

Group Activities	page 4	Technique Workshops	page 10
Youth Classes	page 5	Sip, Savor & Create Workshops	page 11
Drawing and Painting Classes	page 6	Pop In, Pop Art Workshops	page 12
Metal Design and Jewelry Classes	page 7	Family Workshops	page 13
Private Lessons	page 7	Early Release Day Art Camps	page 14
Pottery Classes	page 8-9	Kids’ Art Night Out	page 15
Pottery Clubs	page 10	Registration Form	page 16



Registration Procedures

- You must fill out the registration form completely. Register early as space is limited!
- We do not take phone registrations.
- Registration is available via web, mail, or in person at our facility.
- We offer online registration. Please visit www.emergegallery.com for more information.
- Registrations may be mailed or delivered in person to:
Emerge Gallery & Art Center, 404 Evans St., Greenville, NC 27858
- Mailed registrations will be recorded by date of receipt.
- Payment may be made by check, cash, or credit card.

Payment and Refund Policies

- Payments must be made in full. Deposits are not accepted.
- All refunds must be requested in writing via mail, in person, or via email to paula@emergegallery.com.
- In the event of any refund Emerge Gallery & Art Center will retain a \$20 processing fee.
- Full refunds are available up to 14 days prior to a class, minus a processing fee of \$20.
- A partial refund of 50% is available after 14 days up to 7 days prior to class, which includes the processing fee of \$20.
- There will be NO refunds (full or partial) after 7 days prior to a class.
- In the case of emergency, sickness, or similar events, please contact Paula Rountree at Emerge Gallery & Art Center concerning your situation in writing. Each situation is examined on an individual basis. Decisions are made by the Education Committee.
- Emerge Gallery & Art Center does not offer makeup classes in any form for classes missed due to no fault of our organization. This includes switching classes or sessions.
- Prior to a session beginning, a request to switch a registration from one session to another will incur a \$10-\$20 processing fee, depending on the timeline of your request.

Class Guidelines and Accessibility

- We encourage you to dress for mess.
- Emerge Gallery & Art Center asks that if the student is sick or showing signs of becoming sick, that you do not attend class.
- Individuals requesting accommodation under the Americans with Disabilities Act (ADA) should contact the Programs Director at paula@emergegallery.com at least two weeks prior to the start of class.
- Most of our studio classrooms are located on our second floor, however we are able to make all of our art opportunities available on the first floor if you are unable to walk upstairs. We ask that a request is made at least two weeks prior to the start of class.

Group Activities



Emerge Gallery & Art Center schedules activities and special events for groups. We can cater our lessons to your needs. Just ask! This format is great for the fun night out among friends, work parties, scout badges, and traveling art camps.

We Offer:

- Painting - Acrylics, Watercolor, or Mixed Media
- Ceramics - Potter's Wheel or Handbuilding
- Metal Design - Jewelry or Metal Design
- Textiles - Silk Painting, Fabric Collage, Fabric Dying or Screen Printing

Group Activity Package Rates

Package One: 1.5 hour activity
Starting at \$120.

Package Two: Half Day: 2 hour art activity, 1 hour room rental for your group. (3 hours)
Starting at \$30 per person

Package Three: Full Day: Two 3 hour activity with 1 hour lunch. (7 hours)
Starting at \$60 per person

ART BASED TEAMBUILDING TO FUEL CREATIVITY!

BENEFITS OF TEAM BUILDING:

Empower your workforce through hands-on, creative teambuilding!

Energize Your Team - Develop Their Skills

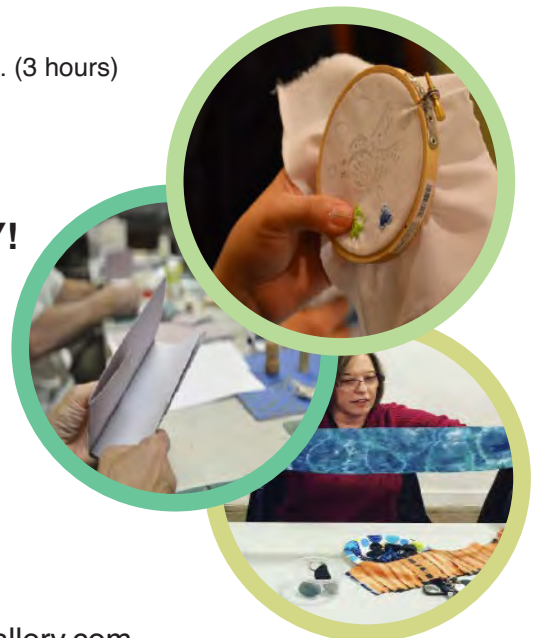
Rely on our Expertise - Inspiring Creative Space

Let's Get Started!



Emerge Gallery & Art Center
404 Evans Street, Greenville, NC 27858
(252) 551-6947
Paula Rountree, Programs Director
paula@emergegallery.com | www.emergegallery.com

Parties must be booked two weeks in advance.
Please contact Paula Rountree to book your group activity!



Youth Classes

Metalsmithing Basics

Grade 6 and up

Create your own unique jewelry with a found object from home or our studio! In this class we will use beginner level stone setting and hand fabrication to create your own jewelry piece. Students are introduced to essential bench tools, workspace, and techniques of a metalsmith or bench jeweler such as sawing, piercing, riveting, texture, and patina. You will learn how to combine several techniques and create a work of art that has meaning to you. No experience needed. [Min. 4, Max. 7]

All materials included.

Tuesdays, 6:00pm - 8:00pm

Instructor: Sonya Coulson Rook

Session 1: September 24 - October 22 (5 classes) Reg. Code: AMD-10

Session 2: November 5 - December 10 (5 classes) Reg. Code: AMD-11

***Skipping the week of Thanksgiving**

Cost: \$95 for Emerge members, \$135 for non-members

Sibling Discount: \$5 off after the first child



Drawing and Painting

Grade 6 and up

Whether it is watercolor, acrylic, color pencils, charcoal, or graphite that strikes your fancy, we have the class for you! During this class we will dive into the different areas of painting and drawing, while completing one of a kind pieces of art. Our class structure is great for beginners or experienced painters and drawers to further their skills! No experience needed. [Min. 4, Max. 12]

All materials included.

Wednesdays, 6:00pm - 8:00pm

Instructor: Holton Stokes

Session 1: September 25 - October 23 (5 classes) Reg. Code: PAD-10

Session 2: November 6 - December 11 (5 classes) Reg. Code: PAD-11

***Skipping the week of Thanksgiving**

Cost: \$85 for Emerge members, \$125 for non-members

Sibling Discount: \$5 off after the first child



Mixed Media Madness

Grade 1 - 5

Are your young artists interested in exploring the wide world of art? Then this class is for them! Students will be exposed to a wide variety of mediums while creating works of art. Students will get to explore drawing, painting, printmaking, mixed media, handbuilding with clay, and much more! [Min. 4, Max. 12]

All materials included.

Wednesdays, 6:00pm - 8:00pm

Instructor: Alex Chisler

Session 1: September 25 - October 23 (5 classes) Reg. Code: AF-10

Session 2: November 6 - December 11 (5 classes) Reg. Code: AF-11

***Skipping the week of Thanksgiving**

Cost: \$85 for Emerge members, \$125 for non-members

Sibling Discount: \$5 off after the first child



Drawing and Painting

Intro to Painting, Drawing and Mixed Media

Do you want to learn to paint or draw? Are you interested in working with mixed media? Would you like to perfect your skills? If so, sign up for this fun class! This open studio style class offers fellowship with other artists interested in painting, drawing, and mixed media while collaborating together on great new project ideas. [Min. 4, Max. 12]

Ages 16 and up with special permission.

First day supplies are included. The instructor will provide a supply list at the first class.

Tuesdays, 1:00pm - 3:00pm

Instructor: Gail Ritzer

Session 1: September 24 - October 22 (5 classes)

Session 2: November 5 - December 10 (5 classes)

***Skipping the week of Thanksgiving**

Reg. Code: PDM-10

Reg. Code: PDM-11

Cost: \$75 for Emerge members, \$115 for non-members



Drawing and Painting

Whether it is watercolor, acrylic, oils, charcoal, or graphite that strikes your fancy, we have the class for you! Our classes are small and taught like several private lessons at once, geared towards your specific interests and subject matter choices. You will learn just as much from your classmates as you will from your instructor with an open studio feel. Our class structure is great for beginners or experienced painters and drawers to further their skills! [Min. 4, Max. 12]

Ages 16 and up with special permission.

First day supplies are included. The instructor will provide a supply list at the first class.

Thursdays, 6:00pm - 8:30pm

Instructor: Samuel Sugar

Session 1: September 26 - October 24 (5 classes)

Session 2: November 7 - December 12 (5 classes)

***Skipping the week of Thanksgiving**

Reg. Code: PAO-10

Reg. Code: PAO-11

Cost: \$85 for Emerge members, \$125 for non-members



Are you an Emerge Student?

Become a Member of Emerge!

Benefits include discounts on classes and workshops.

Student/Senior • Individual • Family • Donor • Sponsor • Patron • Benefactor



Metal Design and Jewelry

Metalsmithing Basics

Create your own unique jewelry with a found object from home or our studio! In this class we will use beginner level stone setting and hand fabrication to create your own jewelry piece. Students are introduced to essential bench tools, workspace, and techniques of a metalsmith or bench jeweler such as sawing, piercing, riveting, texture, and patina. You will learn how to combine several techniques and create a work of art that has meaning to you. No experience needed. [Min. 4, Max. 7]

Ages 16 and up with special permission.

Supplies are included with the exception of fine metals, such as silver, that students may wish to use in class.

Tuesdays, 10:00am - 12:00pm

Instructor: Lisette Fee

Session 1: September 24 – October 22 (5 classes)

Reg. Code: TMD-10

Session 2: November 5 – December 10 (5 classes)

Reg. Code: TMD-11

***Skipping the week of Thanksgiving**

Cost: \$95 for Emerge members, \$135 for non-members

Thursdays, 6:00pm - 8:30pm

Instructor: Lisette Fee

Session 1: September 26 – October 24 (5 classes)

Reg. Code: IMD-10

Session 2: November 7 – December 12 (5 classes)

Reg. Code: IMD-11

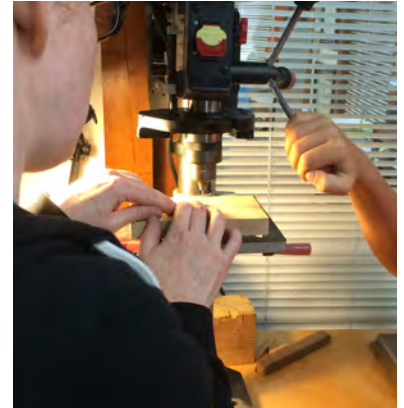
***Skipping the week of Thanksgiving**

Cost: \$110 for Emerge members, \$150 for non-members

As a benefit of enrollment in our metals program, current students are able to come in and work during our open studio hours currently scheduled for Wednesday evenings from 6:30pm until 8:30pm.

Additional details will be discussed on the first night of class.

***Skipping the week of Thanksgiving**



Private Lessons

Private lessons are available in all areas. These hands-on lessons are taught in the one-on-one format with the instructor demonstrating, then letting the student "try it." Class dates and times are scheduled by the student and instructor's mutual agreement. Once a schedule is agreed upon, a staff member will email you a form requesting a \$20 non-refundable deposit, which will come out of the total owed on the first day. Depending on the type of lesson, some materials or a material fee may be required. Ask for more information.

Call Paula Rountree at Emerge (252) 551-6947 or e-mail at paula@emergegallery.com for more information and to schedule.

Cost: \$150 for Emerge members, \$190 for non-members (4 one hour lessons)

Bring a friend: two people for \$100 each, three or more \$75 each - 4 one hour lessons (members only)

Need only one lesson? Schedule by the hour – one person for \$40 an hour, two or more people \$35 an hour per person (members only).

Daytime Pottery Classes

Supply Fees: \$25 per bag of clay (covers glazes and firing) and \$20 Pottery Tool Kit (includes bucket, large sponge for cleaning, wooden and metal rib, wire tool, needle tool, double end loop and large loop trimming tool, modeling tool, and sponge)

Potter's Wheel

This is the perfect class for those interested in learning and perfecting throwing on the potter's wheel. Intermediate and advanced students will work with the instructor on problem solving and refining their skills. This is the perfect class for those interested in learning and perfecting throwing on the potter's wheel. Intermediate and advanced students will work with the instructor on problem solving and refining their skills. Advanced skills such as increasing scale, pulling spouts, and attaching handles will be addressed to challenge potters who have more wheel experience. Intro to Wheel Throwing is a prerequisite to this class. [Min. 4, Max. 8]

Ages 16 and up with special permission.

Tuesdays, 1:00pm - 3:00pm

Instructor: Erika Gibson

Session 1: September 24 – October 22 (5 classes)

Reg. Code: DPW-10

Session 2: November 5 – December 10 (5 classes)

Reg. Code: DPW-11

***Skipping the week of Thanksgiving**

Cost: \$75 for Emerge members, \$115 for non-members



Intro to Wheel Throwing

If you've never tried the potter's wheel but have always wanted to, then this class is for you. If you've thrown on the wheel before but need a refresher or are new to Emerge, then this class is for you too! During this introductory class, you will learn the fundamentals necessary for throwing cylinders and bowls. The session will focus on techniques for centering, opening, pulling, trimming, and glazing. Class size is restricted so students can get the technical instruction required to establish a good foundation for continued learning. This class is a prerequisite for continuing pottery classes. [Min. 4, Max. 6]

Ages 16 and up with special permission.

Wednesdays, 1:30pm - 3:30pm

Instructor: Kim Sawyer

Session 1: September 25 – October 23 (5 classes)

Reg. Code: DWT-10

Session 2: November 6 – December 11 (5 classes)

Reg. Code: DWT-11

***Skipping the week of Thanksgiving**

Cost: \$85 for Emerge members, \$125 for non-members



Handbuilding

In this class you will cover the fundamentals necessary for handbuilding such as rolling slabs and coils, using an extruder, and learn how your hands make great tools. In addition, glazing techniques and surface decoration will be covered. Students will learn how to make various seasonal projects, all of which make great handmade gifts for friends and family. [Min. 4, Max. 8]

Ages 16 and up with special permission.

Thursdays, 1:00pm - 3:00pm

Instructor: Gail Ritzer

Session 1: September 26 – October 24 (5 classes)

Reg. Code: THB-10

Session 2: November 7 – December 12 (5 classes)

Reg. Code: THB-11

***Skipping the week of Thanksgiving**

Cost: \$75 for Emerge members, \$115 for non-members



Evening Pottery Classes

Supply Fees: \$25 per bag of clay (covers glazes and firing) and \$20 Pottery Tool Kit (includes bucket, large sponge for cleaning, wooden and metal rib, wire tool, needle tool, double end loop and large loop trimming tool, modeling tool, and sponge)

Handbuilding: To Function, or Not to Function?

This class will focus on introducing handbuilding techniques including slab building, coiling, and pinch pots. You can use these techniques to make something sculptural or something functional to take home. This is a project-based class, therefore a demonstration will be given at the beginning of each class. Some previous experience with clay is preferred but not necessary. [Min. 4, Max. 8]

Ages 16 and up with special permission.

Tuesdays, 6:00pm - 8:30pm

Instructor: Melissa Gates (Session 1) and Laryssa Entler (Session 2)

Session 1: September 24 – October 22 (5 classes)

Reg. Code: ACT-10

Session 2: November 5 – December 10 (5 classes)

Reg. Code: ACT-11

***Skipping the week of Thanksgiving**

Cost: \$85 for Emerge members, \$125 for non-members



Intro to Wheel Throwing

During this introductory class you will learn the fundamentals necessary for throwing including the techniques for centering, opening, pulling, trimming, and glazing. If you've never tried the potter's wheel but have always wanted to, then this class is for you. If you've thrown on the wheel before but need a refresher or are new to Emerge, then this class is for you too! Class size is restricted so students can get the technical instruction required to establish a good foundation for continued learning. A lesson and demonstration will be given at the beginning of each class. This class is a prerequisite for continuing pottery classes. [Min. 4, Max. 6]

Ages 16 and up with special permission.

Wednesdays, 6:00pm - 8:30pm

Instructor: TBA

Session 1: September 25 – October 23 (5 classes)

Reg. Code: IWT-10

Session 2: November 6 – December 11 (5 classes)

Reg. Code: IWT-11

***Skipping the week of Thanksgiving**

Cost: \$95 for Emerge members, \$135 for non-members



Continuing Potter: Beyond the Basics

Continuing students will hone their skills at centering, opening, and pulling during this class. Projects are designed to help improve the fundamentals necessary for crafting advanced cylinders and bowls. Advanced skills such as increasing scale, pulling spouts, and attaching handles will be addressed to challenge potters who have more wheel experience. Each project will include glazing and surface decoration discussions. This class is project driven and will allow students to take home several functional pieces! Intro to Wheel Throwing is a prerequisite to this class. [Min. 4, Max. 8]

Ages 16 and up with special permission.

Thursdays, 6:00pm - 8:30pm

Instructor: Erika Gibson

Session 1: September 26 – October 24 (5 classes)

Reg. Code: CPW-10

Session 2: November 7 – December 12 (5 classes)

Reg. Code: CPW-11

***Skipping the week of Thanksgiving**

Cost: \$85 for Emerge members, \$125 for non-members



Pottery Clubs

Membership to **The Firing Circle** and **Mudhole** is open to all current and previously enrolled students taking classes through our pottery program. You also have to be approved by the current Education Coordinator for admission. If you have not taken a pottery class through Emerge, you must first enroll in the Clay Studio Orientation Class prior to joining a Pottery Club. Those who have not previously taken a class with Emerge will be able to request a Clay Studio Orientation Class depending on availability and space for the program. Email Heather Suter at education@emergegallery.com for approval.

Mudhole

Mudhole membership entitles you to use our facilities any time during our open hours, whether you are currently enrolled in a class or not, the ability to purchase clay at class rates, use of glazes, and your work will be fired through our facility.

- 1 month Membership Rates: \$50 for members of Emerge (members only)
- 3 Month Membership Rates: \$120 for members of Emerge, \$160 for non-members

The Firing Circle

Members of the Firing Circle are paying only for the use of the kiln facilities. They are not eligible for use of the pottery facility including wheels, tables, equipment, etc. This is simply a club for those individuals who wish to create and work on their artwork off site, but need kiln usage. Clay and glazes are not included. Clay may be purchased at class rates. Clay not purchased at Emerge is not permitted. Dues run on a 6 month basis. Members pay for firing by drying room shelf load (shelves are approximately 12" x 36").

- 6 Month Membership Rates: \$25 for Emerge members, \$65 for non-members
- Firing Rates: \$15 per drying room shelf

Technique Workshops

Technique Workshops will be offered during both our spring and fall semesters. These workshops are available to those who are interested in learning a specific technique in their artform and are looking for assistance in getting there. We hope to offer these workshops in a variety of mediums and would love to hear what you would like to see. Please email education@emergegallery.com with any suggestions for future workshops.

Cost: \$40 for Emerge members, \$60 for non-members

Handbuilding Halloween Lanterns - Pottery

(Current students, Firing Circle, and Mudhole members only)

During this two-hour workshop students will learn to hand build multiple kinds of Halloween themed lanterns. Templates and instruction will be provided for both a jack-o-lantern and ghost lantern. You are not required to prep anything in order to participate in this workshop, however you will need to use your personal clay supply. [Min. 4, Max. 10]

Date: Saturday, Saturday 28
Time: 1:30pm - 3:30pm

Instructor: Laryssa Entler
Reg Code: TECH-05

Sip, Savor & Create



Make plans to join us for one or more of our Sip, Savor, and Create Workshops that uses artistic fun as a great excuse to have a night out. Grab your friends and join us for a wonderful art project while enjoying your favorite beverage. No experience is necessary, but a willingness to have fun is!

All supplies are included. Please feel free to bring a beverage of your choice.

This is an adult workshop series, and recommended for ages 18+ and up! Anyone under the age of 18, MUST be accompanied by an adult! Youth under the age of 16 are not admitted into adult workshops.

We provide:

All the art supplies
A great art instructor

You need to bring:

You!
Friends!
Your Favorite Beverage (Beer and white wine are welcome. No liquor please.)

Cost: \$40 for Emerge members, \$60 for non-members

*Discount of \$10 off for the second enrollment of Emerge members in the same household.

Encaustic Painting

Encaustic painting involves using heated beeswax mixed with colored pigments and then painting with it. This style of hot wax painting can be built up in relief layers and the wax gives a rich optical effect to the pigment. Everyone will walk home with an ancient Greek style painting and a new experience to go along with it. [Min. 4, Max. 12]

Date: Friday, September 20

Time: 6:30pm - 8:30pm

Instructor: Ashley Cagle

Reg. Code: WND-09



Potter's Wheel

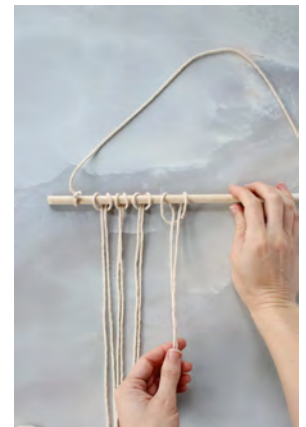
Come visit our studio to center clay and help center yourself! It's been a tough week, so treat yourself to have a creative release while enjoying date night with a friend or significant other at Emerge. This is a great opportunity to try out the potter's wheel and maybe find a new hobby you will enjoy. [Min. 4, Max. 10]

Date: Friday, October 25

Time: 6:30pm - 8:30pm

Instructor: TBA

Reg. Code: WND-10



Macramé Wall Hanging

This macramé textile workshop will teach you different knotting techniques and the process of hitching them together to create a decorative wall hanging. It's similar to knitting, crocheting, and weaving, but it's done by hand without the use of needles, hooks, or a loom. Your new interior decoration will look great in your home or serve as a handmade gift for the holiday season. [Min. 4, Max. 12]

Date: Friday, November 15

Time: 6:30pm - 8:30pm

Instructor: Ashley Cagle

Reg. Code: WND-11

Pop In, Pop Art



Pop In, Pop Art workshops are back! We will be offering our Pop In Pop Art workshops one Saturday a month starting at 1:00pm. Workshops are available for children as young as age three and adults of all ages. Walk-ins are welcome and encouraged. Commit now and sign up online!

Cost: \$15 for 20-25 minute lesson, per person

Workshop Times:
1:00pm - 1:25pm
1:45pm - 2:10pm
2:30pm - 2:55pm



Seasonal Plate

In this workshop you will learn how to make a small fall or Halloween shaped plate. There will be templates to choose your own seasonal slab constructed plate and then you can add a bit of color with underglaze. Participants will return at a later date to pick up their pots after they have been glazed.

Date: Saturday, September 7



Embroidered Notebooks

Participants will learn how to embroider a small notebook cover with thread and a needle. This little personalized notebook is great for jotting down a note, recipe, or drawing a small sketch.

Date: Saturday, October 5



Potter's Wheel

Come in to learn how to make a small bowl on the potter's wheel! You will learn to center and pull the clay to make a simple form. Participants will return at a later date to pick up their pots after they have been glazed.

Date: Saturday, November 2

Printmaking Holiday Cards

In this workshop you will learn a fast and easy hand printing method with paint and a holiday theme. Your final creations will make great original hand printed cards or art prints you can frame for your holiday decor.

Date: Saturday, December 7



Family Workshops



Spend a little quality time with the ones you love by creating something together! This monthly series invites families to create art side by side in a different medium each month! Our two-hour workshops provide a fun and rewarding time for parents, grandparents, or older siblings to work with a young person while exploring new materials and creating a project together or separately

Cost: \$20 per person for Emerge members, \$30 per person for non-members
(must sign up at least 1 adult, 1 child)

*Discount of \$10 off for the third enrollment in a household.

Bat Bowl

(ages 3 and up)

Family members will be making whimsical bat bowls out of clay using several handbuilding techniques. Please bring your imagination full of Halloween fun while creating your new holiday decoration! After construction, projects will be painted with underglaze during the workshop, fired by our staff, and ready for pick up a few weeks later. [Min. 4, Max. 12]

Date: Sunday, September 29
Time: 1:30pm - 3:30pm

Instructor: Laryssa Entler
Reg. Code: FWS-09



Copper Keepsake

(ages 7 and up)

Participants will venture into our Metals Studio and learn different stamping and texture techniques to decorate a piece of copper. Then you will learn how to turn that small piece of metal into a key chain, pendant, or earrings. Your art makes for a great gift or keepsake. [Min. 4, Max. 8]

Date: Sunday, October 27
Time: 1:30pm - 3:30pm

Instructor: Sonya Coulson Rook
Reg. Code: FWS-10



Holiday Embroidery Hoop

(ages 7 and up)

We will cover a few basic embroidery stitching techniques with a needle, different colored embroidery floss, and possibly beads if you choose. Our instructor will help you navigate a holiday design we have provided for you to decorate a small piece of fabric in an embroidery hoop. You will go home with a cute wall or tree ornament for the holidays. [Min. 4, Max. 12]

Date: Sunday, November 17
Time: 1:30pm - 3:30pm

Instructor: Isabel Jackson
Reg. Code: FWS-11



Early Release Day Art Camp



Do you miss camp like we do? Check out our Early Release Day Art Camp on Pitt County Schools' early release days. No two days of our camps will be alike, as we explore a different medium each day. Sign up for one, or both days. (Grade 1 and up, divided into age-appropriate groups)

Cost: \$30 for Emerge members, \$40 for non-members

Sibling Discount: \$5 off after the first child

Extended Pick Up (5:00pm - 5:15pm): \$5 per child

Getting Muddy with Pottery!

During this camp, your child will start their wheels and there begins an instant passion for pottery. They will explore wheel work and handbuilding as they concentrate on the basic skills and fundamentals of clay.

Thursday, September 26

Time: 12:00pm - 4:00pm

Reg. Code: ERAC-04

Photography Fun!

Campers will learn the basics of photography in this fun camp. Campers will experience photography in multiple ways through alternative photography including cyanotype (if weather allows) and mixed media utilizing photography by assembling multiple images and materials. No special equipment is needed for this camp. Emerge will supply point-and-shoot cameras for projects that require them.

Friday, November 8

Time: 12:00pm - 4:00pm

Reg. Code: ERAC-05

Schedule

12:00pm - 1:00pm: Drop Off

Drop off window of time. You can drop off your child(ren) anytime during this time, depending on when your school lets out. Youth can use this time to eat lunch (that you provide), work on homework, read, or we will have some art materials available while they wait for the start of camp.

1:00pm - 4:00pm: Art Camp

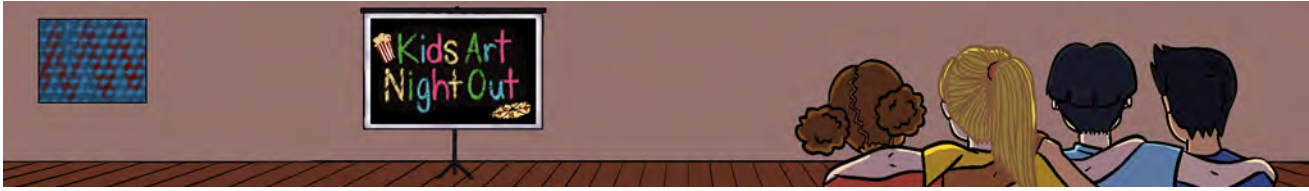
Campers are divided into age-appropriate groups.

4:00pm - 4:15pm: Pick Up

Pick Up



Kids' Art Night Out



Kids' Art Night Out provides parents an opportunity to have a night out on the town, or enjoy a quiet evening in, while their children enjoy a fun night at Emerge Gallery & Art Center! Kids will enjoy a pizza dinner and a variety of art activities! Art activities will include pottery, painting, printmaking, and more! We will end the night with a movie on the big screen and popcorn! Kids are encouraged to wear comfy clothes, and bring a blanket or sleeping bag, and a pillow for movie time. All films shown are PG or G rated. Open to ages 5 and up.

Cost: \$30 for first child for Emerge members, \$40 for first child for non-members,
Sibling Discount: \$5 off after the first child

Werewolf Self Portrait

We are getting into the holiday spirit by howling at the full supermoon. We will be taking selfies and turning ourselves into werewolves. If time allows, we will also make a frame for them. [Min. 4, Max. 12]

Date: Friday, October 18
Time: 5:45pm - 9:15pm

Instructor: TBA
Reg. Code: KANO-06

Potter's Wheel

Participants will learn the basics of working on the potter's wheel. They will learn to center and pull the clay to make a simple form. Participants will choose one or two of their best attempts to keep, and return to pick up their pots after they have been glazed. [Min. 4, Max. 10]

Date: Friday, November 22
Time: 5:45pm - 9:15pm

Instructor: Gabriella Galvan
Reg. Code: KANO-07

Silk Scarf

Kids will dive into the world of dyeing silk scarves using out of the box techniques. Once complete they will have a colorful abstract scarf that they show off during the holiday season or gift to someone they love. [Min. 4, Max. 12]

Date: Friday, December 13
Time: 5:45pm - 9:15pm

Instructor: Ashley Cagle
Reg. Code: KANO-08

Schedule

5:45pm - 6:00pm: Drop Off
6:00pm - 6:30pm: Pizza Dinner
6:30pm - 7:30pm: Art Activity
7:30pm - 9:00pm: Movie and Popcorn
9:00pm - 9:15pm: Pick Up



Registration Form

Student's First Name: _____ Student's Last Name: _____

Address: _____ City: _____ State: _____ Zip: _____

Phone (home): _____ Phone (cell): _____

E-Mail: _____

Emergency Contact Information: _____

Relationship: _____ Phone: _____

If you have a disability and may require accommodations in order to fully participate, please indicate here:

How would you like to be contacted to discuss your needs: _____

Below must be completed if student is under 18 years of age:

Child's Age: _____ Birthday: _____ Grade: _____ School: _____

1st Parent/Guardian's Name: _____

2nd Parent/Guardian's Name: _____

Does your child have any allergies or medical conditions we should be aware of? (Please list below.)

Are you (or your child) a member of the Emerge Gallery & Art Center?: Yes _____ No _____

Do you agree to Emerge Gallery & Art Center photographing you or your child and using it in promotional materials (web, print, etc) and social media (facebook, twitter, instagram, etc)? Yes _____ No _____

Class Name:	Registration Code:	Amount:
1.		
2.		

Waiver of Liability: In consideration for Emerge Gallery & Art Center making programs available to myself or my child, I hereby release Emerge Gallery & Art Center, its employees, volunteers, instructors, and agents from any and all liability, cost/expense associated with any injury or illness that I or my child may sustain while participating in any of the programs and activities. I voluntarily agree to assume all of the foregoing risks and accept sole responsibility for any injury to myself (including, but not limited to, personal injury, disability, and death), illness, damage, loss, claim, liability, or expense, of any kind, that I may experience or incur in connection with me or my child's attendance at Emerge Gallery & Art Center or participation in Emerge Gallery & Art Center programming. In case I cannot be reached in an Emergency, I give my permission to the Emerge Gallery & Art Center to select proper Emergency care and treatment for my child or myself. Furthermore, I hereby hold Emerge Gallery & Art Center, its employees, volunteers, instructors, and agents harmless for any damage, loss, or claims to my person, child, or property. I understand that payment must be made in full. I agree to the refund policy stated in the class booklet in the event of a refund request. Refunds are possible up to one week prior to class. No refunds 5 days prior.

Signature: _____ Date: _____

If under 18 years of age must be signature of Parent or Legal Guardian.

Please remember to mark your calendar!

With questions and/or for enrollment information, please contact Heather Suter, Education Coordinator, at education@emergegallery.com.